



Article

# Metabolic Fingerprint of Acromegaly and its Potential Usefulness in Clinical Practice

Betina Biagetti <sup>1,\*</sup>, J.R. Herance <sup>2</sup>, Roser Ferrer <sup>3</sup>, Anna Aulinas <sup>4</sup>,  
Martina Palomino-Schätzlein <sup>5</sup>, Jordi Mesa <sup>1</sup>, J.P. Castaño <sup>6,7,8,9</sup>, Raul M. Luque <sup>6,7,8,9</sup>  
and Rafael Simó <sup>1,\*</sup>

- <sup>1</sup> Diabetes and Metabolism Research Unit, Vall d'Hebron Research Institute and CIBERDEM (ISCIII), Universidad Autónoma de Barcelona, 08035 Barcelona, Spain; jorge.mesa@vhir.org
- <sup>2</sup> Medical Molecular Imaging Research Group, Vall d'Hebron Research Institute, CIBBIM Nanomedicine and CIBERbbn, 08035 Barcelona, Spain; raul.herance@vhir.org
- <sup>3</sup> Department of Biochemistry, Vall d'Hebron University Hospital, 08035 Barcelona, Spain; roferrer@vhebron.net
- <sup>4</sup> Endocrinology Department. Hospital Universitari de Vic, 08500 Barcelona, Spain; aulinasm@gmail.com
- <sup>5</sup> NMR Facility, Centro de Investigación Príncipe Felipe, 46012 Valencia, Spain; mpalomino@cipf.es
- <sup>6</sup> Maimonides Institute for Biomedical Research of Córdoba (IMIBIC), 14004 Cordoba, Spain; justo@uco.es (J.P.C.); bc2luhur@uco.es (R.M.L.)
- <sup>7</sup> Department of Cell Biology, Physiology, and Immunology, University of Córdoba, 14004 Cordoba, Spain
- <sup>8</sup> Hospital Universitario Reina Sofía (HURS), 14004 Cordoba, Spain
- <sup>9</sup> Department of Cell Biology, Physiology, and Immunology, CIBERobn, 14004 Cordoba, Spain
- \* Correspondence: bbiagetti@vhebron.net (B.B.); rafael.simo@vhir.org (R.S.); Tel.: +34-934894172 (B.B. & R.S.)

Received: 13 August 2019; Accepted: 23 September 2019; Published: 26 September 2019

**Abstract:** Insulin-like growth factor-1 (IGF-1) and growth hormone (GH) levels are the main targets for monitoring acromegaly activity, but they are not in close relationship with the clinical course of the disease and the associated comorbidities. The present study was aimed at identifying metabolites that could be used as biomarkers for a better disease phenotyping. For this purpose, metabolic fingerprint using an untargeted metabolomic approach was examined in serum from 30 patients with acromegaly and 30 age-matched controls. Patients with acromegaly presented fewer branched-chain amino acids (BCAAs) compared to the control group (valine:  $4.75 \pm 0.87$  vs.  $5.20 \pm 1.06$  arbitrary units (AUs),  $p < 0.05$ ; isoleucine:  $2.54 \pm 0.41$  vs.  $2.80 \pm 0.51$  AUs;  $p < 0.05$ ). BCAAs were also lower in patients with active disease compared to patients with normal levels of IGF-1 with or without medical treatment. GH, but not IGF-1, serum levels were inversely correlated with both valine and isoleucine. These findings indicate that low levels of BCAAs represent the main metabolic fingerprint of acromegaly and that GH, rather than IGF-1, might be the primary mediator. In addition, our results suggest that the assessment of BCAAs could help to identify active disease and to monitor the response to therapeutic strategies.

**Keywords:** acromegaly; metabolomics; amino acids; branched chain; insulin resistance; muscular weakness

## 1. Introduction

Acromegaly (ACRO) is a rare chronic debilitating and multisystem disease due to non-suppressible growth hormone (GH) oversecretion, commonly caused by a pituitary tumor [1]. The autonomous production of GH leads to an increase in the synthesis and secretion of insulin-like growth factor-1 (IGF-1) mainly by the liver, which results in somatic overgrowth, metabolic changes, and several comorbidities [2,3]. Although improvements in surgery and medical therapy decreased

the mortality in patients with ACRO, it still remains higher than in the general population [4]. This increase in mortality is mainly due to the higher rate of cardiovascular and malignant diseases in comparison with the age-matched general population [4–7].

The duration of the disease and serum GH/IGF-1 levels were shown as independent predictors of overall mortality and co-morbidities [8–12] and, therefore, current therapeutic strategies are aimed at inhibiting the GH/IGF-1 axis. However, the precise effects that can be attributed to increased GH or IGF-1 levels are still unclear [13,14]. Moreover, both GH and IGF-1 levels are not always directly and unequivocally associated with patients' quality of life and the presence and severity of co-morbidities [15]. Currently, huge efforts are being made to detect activity disease pointing other variable adjuvants to GH/IGF-1 [16,17]. Overall, these findings suggest that other factors, yet unidentified, could contribute significantly and/or may ultimately be responsible for the different clinical phenotypes, associated comorbidities, and prognosis of these patients. In this context, it is worth noting that one of the major and less understood comorbidities accompanying acromegaly is a profound dysregulation of key players in energy balance and metabolic homeostasis (e.g., glucose and lipid axes).

Metabolomics provides a comprehensive metabolite profile of any biological sample, thus enabling a definition of the chemical phenotype and metabolic fingerprint of human subjects and animal models. This “omics” approach has unique potential for defining metabolites and pathways involved in the pathophysiology of a disease and served to guide the identification of useful biomarkers for monitoring the activity of various diseases, particularly those related to metabolic disturbances. [18]. Hence, it seems conceivable that this approach could be particularly interesting in patients with ACRO in order to complement the information derived from the assessment of GH/IGF-1.

On this basis, the aims of the present study were to (1) identify metabolites and pathways that could be used as biomarkers of the disease, and (2) explore whether metabolomics could be useful in differentiating those patients with active disease from patients who are either well controlled through pharmacological treatment or already cured.

## 2. Experimental Section

### 2.1. Ethics Statement

The study was conducted according to the mandates in the Declaration of Helsinki, and the Ethics Committees of the Vall d'Hebron University Hospital approved all procedures (protocol number PR-198/2013). Written informed consent was obtained from all the participants before any action.

### 2.2. Design and Patients

A case-control study following the Strobe rules was designed [19] A total of 30 patients with ACRO (16 males and 14 females), consecutively recruited from 1 February 2016 to 31 January 2017 at the outpatient clinic of the Endocrinology Department at Vall d'Hebron and 30 age-matched controls were included in the study. The main clinical characteristics of patients with ACRO are displayed in Table 1.

**Table 1.** Baseline characteristics of acromegaly (ACRO) and matched controls.

	Cases ( <i>n</i> = 30)	Controls ( <i>n</i> = 30)	<i>p</i> -Value
Gender male ( <i>n</i> , %)	16 (53.3%)	16 (53.3%)	0.60
Age years (mean +/- SD)	59.5 ± 11.3	56.3 ± 11.	0.22
BMI kg/m <sup>2</sup> (mean ± SD)	29.57 ± 5.7	27.3 ± 5.1	0.08
Smoking ( <i>n</i> , %)	5 (16.7%)	5 (16.7%)	0.95
Diabetes ( <i>n</i> , %)	7 (23.3%)	6 (20.0%)	0.09
Hypertension ( <i>n</i> , %)	8 (26.7%)	11 (36.7%)	0.58
Dyslipidemia ( <i>n</i> , %)	11 (36.7%)	14 (46.7%)	0.60

HOMA-IR p50 (IQR)	1.9 (2.8)	3.0 (2.6)	0.06
HOMA-B p50 (IQR)	131.3 (137.1)	164.3 (92.0)	0.25
GH p50 (IQR)	0.63 (2.69)	0.31 (0.71)	0.03
IGF-1 p50 (IQR)	216.1 ± 192	143.0 ± 58	0.00

ACRO: acromegaly; BMI: body mass index; SD: standard deviation; p50: percentile 50 (median); IQR: interquartile range; HOMA-IR: homeostatic model assessment of insulin resistance; HOMA-B:  $\beta$ -cell function; *p*-values: Fisher's exact test for categorical variables and Mann-Whitney *U*-test for continuous variables.

The diagnosis of ACRO and the presence of disease activity was established according to the Endocrine Society Clinical Practice Guideline of Acromegaly [20]. On this basis, we studied three cohorts of ACRO patients; five patients were classified as having active disease (ACRO\_active) and 25 presented a controlled disease (14 under medical treatment (ACRO\_medical) and 11 without treatment (ACRO\_remission)). Baseline characteristics of patients with ACRO are shown in Table 2.

**Table 2.** Basal characteristic of patients according to disease status.

	ACRO_Active ( <i>n</i> = 5)	ACRO_Medical ( <i>n</i> = 14)	ACRO_Remission ( <i>n</i> = 11)	<i>p</i>
Gender Male ( <i>n</i> , %)	2 (40.0%)	9 (64.0%)	5 (45.0%)	0.55
Age years (mean +/- SD)	55.4 ± 9.2	64.3 ± 11.1	55.4 ± 10.9	0.10
BMI kg/m <sup>2</sup> (mean ± SD)	29.7 ± 7.4	27.6 ± 4.1	32.1 ± 6.1	0.19
Smoking ( <i>n</i> , %)	2 (40.0%)	2 (14.3%)	1 (9.1%)	0.28
Diabetes ( <i>n</i> , %)	2 (40.0%)	5 (37.7%)	0 (0.0%)	0.04
Hypertension ( <i>n</i> , %)	2 (40.0%)	5 (37.7%)	1 (9.1%)	0.30
Dyslipidemia ( <i>n</i> , %)	1 (20.0%)	6 (20.0%)	4 (42.9%)	0.88
HOMA-IR p50 (IQR)	2.9 (1.88)	1.8 (3.03)	1.7 (2.57)	0.93
HOMA-B p50 (IQR)	132.1 (114.9)	110.2 (155.8)	135.1 (100.2)	0.60
GH (ng/dL) p50 (IQR)	5.0 (7.9)	0.8 (2.2) <sup>a</sup>	0.4 (0.5) <sup>a</sup>	0.00
IGF-1 (ng/dL) p50 (IQR)	392.0 (121)	216.5 (100) <sup>b</sup>	179.0 (115) <sup>a</sup>	0.00

ACRO: acromegaly; BMI: body mass index; SD: standard deviation; p50: percentile 50 (median); IQR: interquartile range; HOMA-IR: homeostatic model assessment of insulin resistance; HOMA-B:  $\beta$ -cell function; *p*-values: Fisher's exact test for categorical and Kruskal-Wallis for continuous variables. <sup>a</sup> vs. ACRO\_active, *p* < 0.05; <sup>b</sup> vs. ACRO\_remission, *p* < 0.05.

Controlled disease was defined as those patients under medical treatment with IGF-1 levels within the specific age and sex-adjusted reference range, and those patients who were not under GH receptor antagonist (pegvisomant) in whom random GH concentrations were lower than 1 ng/mL. Cured disease or disease in the remission stage was defined as those patients without medical treatment in whom GH values were  $\leq$ 0.4 ng/mL after 75 g of oral glucose load.

At study entry, of those patients with active ACRO disease (*n* = 5), three were under treatment with maximum tolerated doses of first-generation long-acting release (LAR) somatostatin analogues (octreotide-LAR or lanreotide-LAR) and two with pegvisomant, none of them in combination. In the ACRO group controlled by medical treatment (*n* = 14), two were treated with pegvisomant, six with octreotide-LAR or lanreotide-LAR, and two with the combination of pegvisomant + somatostatin analogue, and four were controlled by using cabergoline. All of them had non-curative trans-sphenoidal surgery (TSS) and 10 were also treated with radiotherapy more than 10 years ago (one in ACRO\_active, six in ACRO\_medical, and three in ACRO\_remission group).

The 30 control subjects matched by age, sex, body mass index (BMI), and smoking history were hospital workers, relatives, or friends of the patients with ACRO. Exclusion criteria were pregnancy, mental impairment, type 1 diabetes, active severe diseases, and any other condition or treatment that could influence insulin secretion, provoke insulin resistance, or seriously influence the analysis of the results. Neither patients nor controls were taking protein or BCAAs dietary supplements.

### 2.3. Laboratory Measurements and Phenotypic Characterization

After informed consent was signed, a clinical evaluation, including medical history, smoking status, and physical examination, was performed in all patients and controls. Obesity was defined as

BMI  $\geq 30$  kg/m<sup>2</sup>. Hypertension was defined as systolic blood pressure  $>140$  mmHg and/or diastolic blood pressure  $>90$  mmHg or the use of antihypertensive medications. Dyslipidemia was defined as total cholesterol (TC)  $>230$  mg/dL, low-density lipoprotein (LDL)  $>160$  mg/dL, triglycerides  $>150$  mg/dL, or treatment with lipid-lowering medications. Homeostatic model assessment of insulin resistance (HOMA-IR) score was calculated as follows: (fasting insulin (mU/L)  $\times$  fasting glucose (mg/dL)/405) [21], and homeostasis model assessment of  $\beta$ -cell function (HOMA-B) was calculated as follows: (insulin (mU/L)  $\times$  360)/(glucose (mg/dL) – 63) [21–23].

After overnight fasting of at least 8 h, blood samples were drawn from the cubital vein in the supine position using ethylenediaminetetraacetic acid (EDTA) tubes (K3E) with protease inhibitor (BD Vacutainer–Aprotinin 250KIU Ref. 361017), EDTA tubes (BD Vacutainer K2E (EDTA) 7.2 mg Ref. 368861) and tubes without additive (BD Vacutainer SSTII Ref. 366468).

IGF-I concentrations were measured using a Liaison XL IGF-I chemiluminescence assay (Liaison XL-Diasorin, Italy). The assay is referenced to the first World Health Organization (WHO) International Standard for IGF-I The National Institute for Biological Standards and Control (NIBSC) code 02/254; the limit of detection was 3 ng/mL. GH was measured by ImmuliteXP (Siemens Healthcare, EUA); the assay is referenced to the second WHO NIBSC International Standard 98/574 with analytical sensitivity of 0.01 ng/mL.

#### 2.4. Preparation of Plasma Samples for Metabolomics Analysis

A total of 5 mL of peripheral blood freshly extracted was transferred to plasma tubes and allowed to stand for 30 min. The supernatant was then collected and stored at  $-80$  °C until NMR measurement. At the time of analysis, the plasma samples were thawed on ice. Then 300  $\mu$ L of 10% D<sub>2</sub>O buffer (5 mM propionate-2,2,3,3-d<sub>4</sub> (TSP), 140 mM Na<sub>2</sub>HPO<sub>4</sub>, 0.04% NaN<sub>3</sub>, pH 7.4) was added to 300  $\mu$ L of plasma and mixed, and 550  $\mu$ L was transferred to an NMR tube.

The study followed the recommendations of standards for data analysis in metabolomics [24].

#### 2.5. Metabolic Profiling by Nuclear Magnetic Resonance (NMR)

The one-dimensional Carr–Purcell–Meiboom–Gill spectra metabolite resonances (CPMG <sup>1</sup>H NMR) were acquired using Bruker Avance III 500 MHz spectrometers (Rheinstetten, Germany) running under TopSpin, equipped with a Triple Resonance probe. All runs were carried out using a Bruker Samplecase NMR automation system; prior to each run, the 90° pulse length was determined and set for the run. The field frequency was locked on D<sub>2</sub>O contained in the sample. In all experiments, water suppression was carried out by noise irradiation during the 2-s recycle delay (RD). For all experiments, 64 scans were recorded with an acquisition time of 3 s over a spectral width of 10,000 Hz, and an exponential function was applied to the fragment identifier prior to the Fourier transformation, which resulted in a line broadening of 0.3 Hz. All NMR spectra were automatically phased, baseline-corrected, and referenced to the TSP singlet at 0 ppm, using MestreNova software. Baseline and peak alignment quality control was done by individual verification for each spectrum and, occasionally, a spectrum was manually adjusted.

#### 2.6. Statistical Analysis

##### 2.6.1. General Comparisons among Groups

A descriptive analysis was performed to verify the correct introduction of data in the database. Quantitative data are expressed as means and SD (Gaussian distribution) or as medians (p50) and interquartile ranges (IQR; non-Gaussian distribution), and categorical data are expressed as percentages. Data distribution was analyzed by the Kolmogorov–Smirnov test. Logarithmic transformations were performed when necessary to normalize distribution. Comparison between two groups was performed using Student's *t*-test or Mann–Whitney *U*-test as appropriate. A chi-square test was performed for categorical variables. Fisher's exact tests were performed when appropriate. Correlations were assessed using Pearson's correlation coefficient or Spearman rank correlation depending on whether the data were normally distributed. Median values across the three

groups (ACRO\_active, ACRO\_medical, and ACRO\_remission) were compared using the Kruskal–Wallis test, and tendencies were compared using the nonparametric Jonckheere–Terpstra test (JT-TT). Statistical analyses were performed using the STATA14 statistical package (USA) for Windows (Serial number: 301406326640). Statistical significance was accepted at  $p < 0.05$ .

### 2.6.2. Metabolomic Data

$^1\text{H}$  NMR signals were assigned to metabolites with the help of two-dimensional (2D) experiments, and the Human Metabolome Database (HMDB) 4.0 [25] and Biological Magnetic Resonance Data Bank (BMRB) [26] databases. Concentrations were calculated with the help of the digital electronic reference to access in vivo concentrations (ERETIC) signal that was previously calibrated with a standard sample prepared in identical conditions. Optimal integration regions were defined for each metabolite, and an attempt was made to select the signals without overlapping. Integration was performed with global spectra deconvolution in MestreNova 8.1.

For multivariate analyses, metabolite tables generated from spectra integration were normalized, univariate-scaled, and mean-centered for an easier interpretation of the data and to take the variation of small signals into account. Orthogonal and partial least squares discriminant analysis (OPLS-DA) was performed with SIMCA-P 13.0 (Umetrics, Sweden). Models were validated by permutation and cross-validation analysis. The branched-chain amino acid (BCAAs) concentrations are expressed in arbitrary units (AUs), normalized from mM concentrations.

## 3. Results

### 3.1. Patients

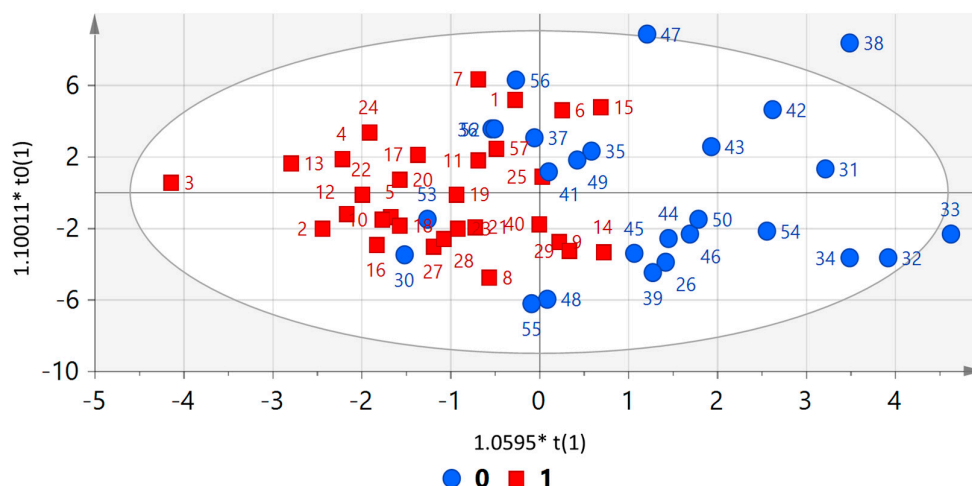
The baseline characteristics of the 30 patients with ACRO and controls are shown in Table 1. Both groups were matched by gender, age, BMI, and smoking habit, and no statistical differences were observed in the presence of other cardiovascular risk factors such as diabetes, hypertension, and dyslipidemia. Likewise, no statistical differences were found in HOMA-IR and HOMA-B, whether when including all subjects or when the analysis was performed by gender.

The distribution of basal characteristics in the group of patients with ACRO according to the disease status is displayed in Table 2. It should be noted that diabetes was present in those patients with active or controlled disease under medical treatment but not in cured patients.

As expected, IGF-1 and GH showed statistically significant differences among groups, being higher in ACRO\_active and ACRO\_medical compared to ACRO\_remission group ( $p < 0.01$  in all comparisons). By contrast, we did not find any statistical difference regarding HOMA-IR and HOMA-B among groups. The results of HOMA-IR and HOMA-B remained similar when patients under pegvisomant treatment ( $n = 4$ ) were excluded from the analysis.

### 3.2. Metabolomic Profile

As shown in Figure 1, an OPLS discrimination model separated the patients with ACRO and matched controls on the basis of plasma metabolite differences. The model was validated by permutation and cross-validation.



**Figure 1.** Score plot from orthogonal and partial least squares discriminant analysis (OPLS-DA) of case (1) and control (0) individuals. Input variables are metabolomic data.  $R^2Y = 0.42$ ,  $Q^2 = 0.16$ . unit variance scaling. Permutation  $R^2 = 0.217$ ,  $Q^2 = -0.333$ . cross-validated -ANOVA: 0.066.

The main altered metabolites are shown in Table 3. Essential amino acids as a group were lower in patients with ACRO in comparison with control subjects. Among the individual essential amino acids, aside from lower levels of branched-chain amino acids (BCAAs), only lysine was significantly lower in patients with ACRO. Lactate was also lower in the ACRO group, whereas, in contrast, dimethylamine was higher. When these parameters were analyzed based on the status of the disease (Table 4), only lysine and BCAAs (valine and isoleucine) continued being lower in patients with active disease; however, only valine had a positive trend test (JT-TT) (b-Tau 0.30,  $p = 0.04$ ). These results should be interpreted cautiously due to the limited number of patients per group.

**Table 3.** Arbitrary units of the main metabolites that differentiate the case and control groups.

	Lysine	Lactate	Valine	Isoleucine	Dimethylamine
ACRO p50 (IQR)	0.72 (0.05)	12.26 (2.78)	4.75 (0.87)	2.54 (0.41)	1.35 (0.18)
Control p50 (IQR)	0.78 (0.08)	14.85 (5.20)	5.20 (1.06)	2.80 (0.51)	1.20 (0.18)
<i>p</i> -value Mann-Whitney	0.002	0.001	0.019	0.023	0.016

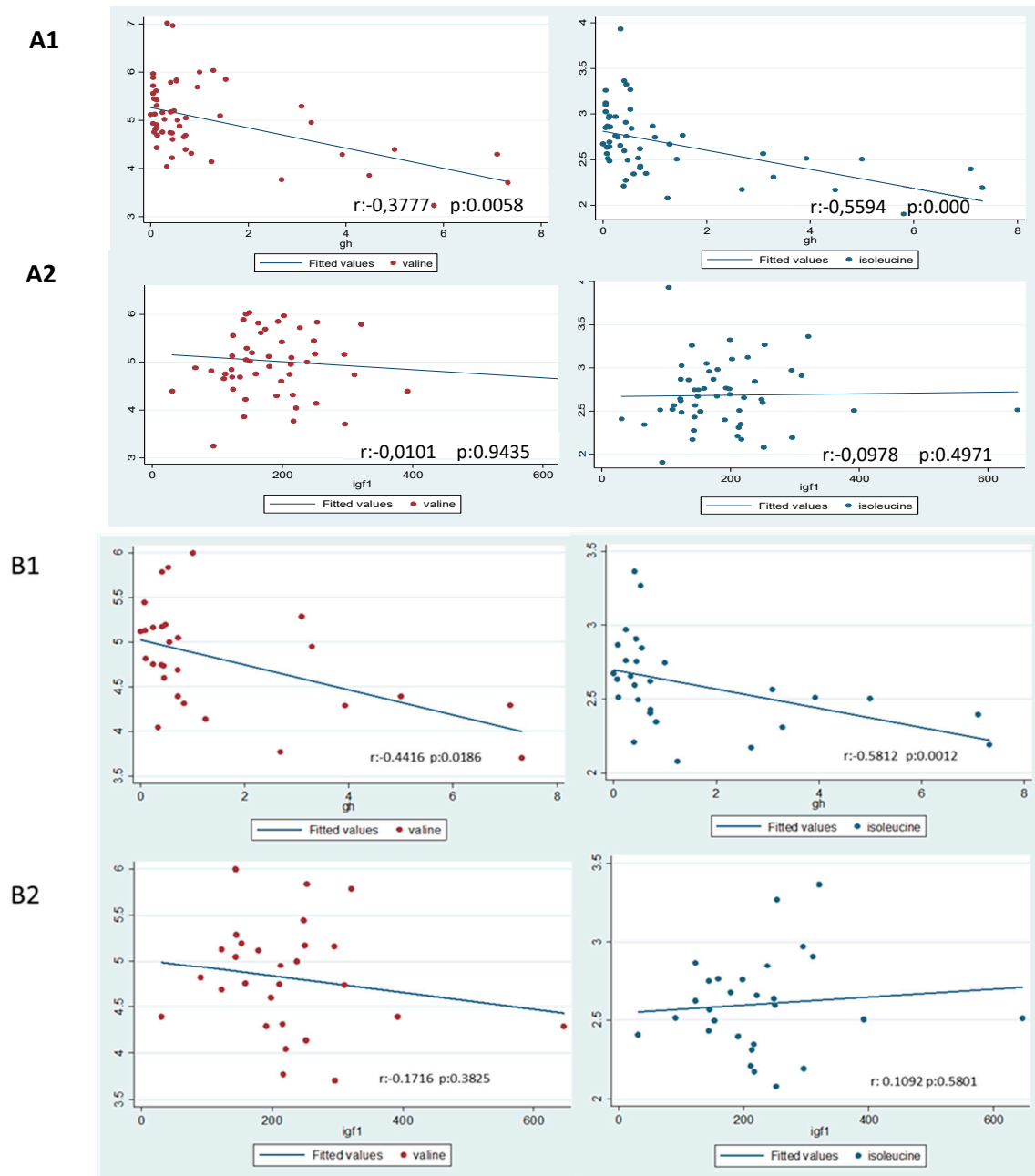
ACRO: acromegaly; p50: percentile 50 (median); IQR: interquartile range.

**Table 4.** Amino-acid concentration according to disease status.

	1—Active (n = 5)	2—ACRO_Medical (n = 14)	3—ACRO_Remission (n = 11)	Jonckheere–Terpstra	
				Tau_b	<i>p</i>
Isoleucine (AUs)	2.50 (0.18)	2.46 (0.44)	2.67 (0.33)	0.26	0.08
Lysine (AUs)	0.69 (0.02)	0.71 (0.08)	0.73 (0.03)	0.28	0.06
Valine (AUs)	4.30 (0.24)	4.71 (1.02)	5.00 (0.54)	0.30	0.04

The table shows median and interquartile range of amino-acid concentrations in each group and the Jonckheere–Terpstra trend test. AUs: arbitrary units.

Results regarding the Spearman correlation between BCAAs and either GH or IGF-1 are displayed in Figure 2. Serum levels of GH were negatively correlated with both valine ( $r = -0.38$ ,  $p < 0.01$ ) and isoleucine ( $r = -0.56$ ,  $p < 0.001$ ) both in the whole population and in the ACRO group: valine ( $r = -0.44$ ,  $p < 0.02$ ) and isoleucine ( $r = -0.58$ ,  $p < 0.001$ ). We did not find any correlation between IGF-1 or HOMA and BCAAs in either the whole population or in patients with ACRO.



**Figure 2.** Correlations (A) in the whole group and (B) in acromegaly (ACRO) patients. *r*: Spearman’s rank correlation coefficient. The figure shows branched-chain amino acid (BCAAs) (valine and isoleucine) Spearman correlations with growth hormone (GH) and insulin-like growth factor-1 (IGF-1) in the whole group (A1 and A2) and in ACRO group (B1 and B2). GH and IGF-1 are expressed in ng/mL and BCAAs are expressed in arbitrary units (AUs).

#### 4. Discussion

The present comparative metabolomic analysis of patients with or without ACRO suggests that the main metabolic fingerprint of ACRO is a decrease in BCAAs, which seems related to the activity of the disease. This finding might help not only toward a better understanding of the pathophysiology of the disease but in complementing its current therapeutic monitoring.

To the best of our knowledge, this is the first metabolomics study performed in patients with ACRO. However, there is some information supporting our findings. In a metabolomics study

performed in non-diabetic patients, Knacke et al. [27] found a negative correlation between IGF-1 and BCAAs. In addition, a clear enhancement of BCAAs was observed in *daf-2* mutant worms, which present a clear defect in IGF-1 signaling [28]. In this context, it is important to emphasize that BCAAs are essential amino acids and cannot be synthesized. Therefore, under homeostatic conditions, a precise balance between intake and loss of BCAAs should be maintained. BCAAs play important roles in skeletal muscle growth and homeostasis, are used as an energy source during exercise, and can serve as gluconeogenic precursors [29].

The reason why patients with ACRO present decreased levels of BCAAs remains to be elucidated. GH serum levels were inversely correlated with valine and isoleucine both in the whole population and in patients with acromegaly. In contrast, we did not find any relationship between BCAAs and IGF-1 levels. These findings point to GH rather than IGF-1 as the main mediator of the metabolic fingerprint observed in the present study. In this regard, in a recent study, reduced BCAAs levels were found in two siblings with growth failure due to a pregnancy-associated plasma protein A2 (PAPP-A2) gene mutation, which results in less IGF-1 bioactivity and increased GH secretion [30]. Interestingly, BCAAs levels increased after treatment with recombinant human IGF-1 with concomitant GH reduction.

BCAAs are suggested as biomarkers for insulin resistance and obesity, and even as predictors of diabetes [31–36]. Since ACRO is classically associated with insulin resistance, our results would seem to gainsay these previous reports. Of note, however, in our series, we did not observe any difference in HOMA-IR between control subjects and the ACRO group, and, within the ACRO group, HOMA-IR was similar between patients with active and controlled ACRO. In addition, we did not find any relationship between HOMA-IR and circulating BCAAs. Therefore, the metabolic fingerprint observed in patients with ACRO would be unrelated to insulin resistance.

The lack of relationship between ACRO and insulin resistance measured by HOMA observed herein merits specific attention, as it argues against the long-assumed, classical concept that insulin resistance represents the main reason for the high prevalence of type 2 diabetes in patients with ACRO [37–41]. In fact, we found less HOMA-B in patients with ACRO than in controls. Medical treatment might influence these results. In this regard, treatment with somatostatin analogues could modify both insulin secretion and insulin sensitivity [42–46], thus making its final result on glucose metabolism unpredictable [42]. By contrast, pegvisomant has favorable effects on glucose metabolism by lowering fasting plasma glucose, HbA1c, and HOMA-IR [47]. However, in a recent, elegant work, in which newly diagnosed and treatment naïve ACRO patients were included, Olarescu et al. found that those patients with high visceral adipose tissue (VAT) presented lower GH levels, higher HOMA-IR, and worse glucose metabolism and lipid profile than patients with normal VAT without insulin resistance [48]. Therefore, it seems plausible that the presence of VAT, rather than GH/IGF-1 activation, could represent the main factor accounting for insulin resistance in patients with ACRO [49]. In addition, a broad range of HOMA-IR values were reported in different series of ACRO but most patients did not present the typical values of HOMA-IR observed in prediabetes or early stages of type 2 diabetes, and a high percentage remained within the normal range [37,48,50–52], which argues against the presumed presence of insulin resistance in these patients. Overall, these findings suggest that the underlying molecular mechanisms involved in the increase of diabetes prevalence in ACRO should be carefully revisited.

The reason why the enhancement of GH/IGF-1 induces a lowering of circulating BCAAs seems related to an increased uptake of these amino acids by the muscle, thus favoring an anabolic action. The first studies showing the effect of GH on muscle protein were measured by an isotope dilution technique, which, in fact, assessed the rate of BCAAs disappearance (an index of protein synthesis) [53–57]. These reports, which provided the basis of our knowledge about the role of GH in muscle and confirmed that GH muscle action is mainly anabolic with little effect on proteolysis, consistently showed a BCAAs reduction after GH administration. More recently, Sawa et al. [58] showed that GH administration improves the transport of BCAAs into the myocyte by increasing L-type amino-acid transporter 1 (LAT1) in GH-deficient rats. In line with this, administration of GH to lactating dairy cows increased milk production and, in both plasma and breast tissue, the BCAAs levels were



significantly reduced [59]. The authors proposed that the lower concentration of BCAAs was the result of orchestrated events in the lactating gland to optimize the supply of amino acids in relation to the milk formation. Finally, given that GH switches substrate metabolism from glucose and protein utilization to lipid oxidation [60], liver and kidney gluconeogenesis must be enhanced. Gluconeogenic substrates include glycerol, lactate, propionate, and glucogenic amino acids such as valine and isoleucine. Our findings showing lower circulating levels of lactate, valine, and isoleucine in patients with ACRO in comparison with control subjects are consistent with this pathway activation. Again, GH, rather than IGF-1, seems the key player in these metabolic changes. Taken together, this information suggests that both the increased gluconeogenesis and the accelerated consumption of BCAAs can contribute to the low levels of BCAAs detected in acromegalic patients.

The decreased serum levels of BCAAs that occur in active ACRO could bear two main consequences, with a paradoxical opposite significance. Firstly, low BCAAs levels could be a contributing factor to the myopathy extensively reported in these patients [61,62]. Secondly, low BCAAs levels could act as protective factor for coronary ischemic disease [63,64]. In this regard, it should be noted that, although cardiovascular disease is the principal cause of premature mortality in patients with ACRO, this is not mainly due to ischemic heart attack [4–7]. In fact, patients with ACRO present a low incidence of heart ischemic disease despite increased cardiovascular risk factors such as diabetes and hypertension [14,65–68]. Interestingly, it was recently reported that defective BCAAs catabolism and the chronic accumulation of BCAAs suppress glucose metabolism and exacerbate ischemia–reperfusion injury [64]. By contrast, a role of BCAAs metabolites in cardioprotection against acute ischemia/reperfusion injury was also proposed [69]. Therefore, specific studies addressed at unraveling the cardiovascular consequences of low circulating levels of BCAAs that occur in patients with ACRO are warranted.

In the event that larger studies confirm that the main metabolic signature of ACRO consists of decreased serum levels of BCAAs, a novel avenue in the setting of therapeutic strategies is foreseeable. In this regard, a supplemental intake of BCAAs can be contemplated as a co-adjuvant treatment of patients with ACRO aimed at increasing the muscular strength, including cardiac contractility. In fact, dietary BCAAs supplementation may mitigate muscle soreness following muscle-damaging exercise [70,71] and may also prevent sarcopenia in patients with liver cirrhosis [72,73]. In addition, experimental studies recently showed that BCAAs are essential for maintaining myofibrillar proteins [74], and that regulation of BCAAs catabolism in muscles is important for homeostasis of muscle energy metabolism and, at least in part, for adaptation to exercise training [75]. Nevertheless, further studies aimed at elucidating this important issue in the setting of ACRO are needed.

Our study has several limitations. Firstly, the limited number of patients included warrants that our results should be reproduced in additional larger cohorts. Secondly, the metabolic fingerprint could be masked by the treatment received by patients with ACRO. However, the same metabolic changes were detected when using somatostatin analogues and pegvisomant. This finding, together with the detected inverse correlation between GH levels and both valine and isoleucine, points to the activity of the disease rather than the treatment received as the main factor accounting for the reported metabolic fingerprint. Finally, patients did not follow a standardized diet before samples were obtained for metabolomic analysis, which could increase the variability of the results. Nevertheless, we were able to detect significant differences in BCAAs when comparing ACRO vs. control subjects and active ACRO vs. ACRO controlled under medical treatment.

## 5. Conclusions

In summary, our study suggests that the main metabolic fingerprint of ACRO is a decrease in BCAAs (i.e., valine and isoleucine), which is unrelated to HOMA-IR. These metabolic abnormalities could help to identify active disease and to monitor the response to distinct therapeutic strategies. Moreover, these preliminary findings also uncover a new research area in adjuvant nutritional support in patients with active ACRO. Thus, further studies are warranted to confirm, in a clinical arena, these pilot original results and to explore their mechanistic underpinnings using appropriate experimental models.

**Author Contributions:** Conceptualization, B.B., A.A., and H.J.R.; methodology, B.B., H.J.R., and M.P.-S.; software, H.J.R. and M.P.-S.; validation, B.B., H.J.R., and R.S.; formal analysis, H.J.R., M.P.-S., and B.B.; investigation, B.B., J.M., and R.S.; resources, R.S.; writing—original draft preparation, B.B.; writing—review and editing, A.A., R.M.L., and J.P.C.; visualization, all authors; supervision, R.S.

**Funding:** This research was funded by Pfizer Global Investigator Initiated Research. J.P.C. and R.M.L. are funded by Junta de Andalucía (CTS-1406, BIO-0139), Ministerio de Ciencia, Innovación y Universidades (BFU2016-80360-R), and Instituto de Salud Carlos III, co-funded by European Union (ERDF/ESF, “Investing in your future”: PI16/00264, CP15/00156 and CIBERobn). CIBER is an initiative of Instituto de Salud Carlos III.

**Conflicts of Interest:** The authors declare that they have no competing interests.

## References

- Melmed, S. Acromegaly pathogenesis and treatment. *J. Clin. Invest.* **2009**, *119*, 3189–3202.
- Colao, A.; Ferone, D.; Marzullo, P.; Lombardi, G. Systemic complications of acromegaly: Epidemiology, pathogenesis, and management. *Endocr. Rev.* **2004**, *25*, 102–152.
- Melmed, S. Medical progress: Acromegaly. *N. Engl. J. Med.* **2006**, *355*, 2558–2573.
- Esposito, D.; Ragnarsson, O.; Granfeldt, D.; Marlow, T.; Johannsson, G.; Olsson, D.S. Decreasing mortality and changes in treatment patterns in patients with acromegaly from a nationwide study. *Eur. J. Endocrinol.* **2018**, *178*, 459–469.
- Arosio, M.; Reimondo, G.; Malchiodi, E.; Berchiolla, P.; Borraccino, A.; Marinis, L.D.; Pivonello, R.; Grottoli, S.; Losa, M.; Cannavò, S.; et al. Predictors of morbidity and mortality in acromegaly: An Italian survey. *Eur. J. Endocrinol.* **2012**, *167*, 189–198.
- Ritvonen, E.; Löyttyniemi, E.; Jaatinen, P.; Ebeling, T.; Moilanen, L.; Nuutila, P.; Kauppinen-Mäkelin, R.; Schalin-Jääntti, C. Mortality in acromegaly: A 20-year follow-up study. *Endocr. Relat. Cancer* **2016**, *23*, 469–480.
- Varadhan, L.; Reulen, R.C.; Brown, M.; Clayton, R.N. The role of cumulative growth hormone exposure in determining mortality and morbidity in acromegaly: A single centre study. *Pituitary* **2016**, *19*, 251–261.
- Rajasoorya, C.; Holdaway, I.M.; Wrightson, P.; Scott, D.J.; Ibbertson, H.K. Determinants of clinical outcome and survival in acromegaly. *Clin. Endocrinol. (Oxf.)* **1994**, *41*, 95–102.
- Orme, S.M.; McNally, R.J.; Cartwright, R.A.; Belchetz, P.E.; United Kingdom Acromegaly Study Group. Mortality and cancer incidence in acromegaly: A retrospective cohort study. *J. Clin. Endocrinol. Metab.* **1998**, *83*, 2730–2734.
- Holdaway, I.M.; Rajasoorya, R.C.; Gamble, G.D. Factors influencing mortality in acromegaly. *J. Clin. Endocrinol. Metab.* **2004**, *89*, 667–674.
- Mercado, M.; Gonzalez, B.; Vargas, G.; Ramirez, C.; de los Monteros, A.L.E.; Sosa, E.; Jervis, P.; Roldan, P.; Mendoza, V.; López-Félix, B.; et al. Successful mortality reduction and control of comorbidities in patients with acromegaly followed at a highly specialized multidisciplinary clinic. *J. Clin. Endocrinol. Metab.* **2014**, *99*, 4438–4446.
- Sardella, C.; Cappellani, D.; Urbani, C.; Manetti, L.; Marconcini, G.; Tomisti, L.; Lupi, I.; Rossi, G.; Scattina, I.; Lombardi, M.; et al. Disease activity and lifestyle influence comorbidities and cardiovascular events in patients with acromegaly. *Eur. J. Endocrinol.* **2016**, *175*, 443–453.
- Lu, C.; Schwartzbauer, G.; Sperling, M.A.; Devaskar, S.U.; Thamocharan, S.; Robbins, P.D.; McTiernan, C.F.; Liu, J.L.; Jiang, J.; Frank, S.J.; et al. Demonstration of direct effects of growth hormone on neonatal cardiomyocytes. *J. Biol. Chem.* **2001**, *276*, 22892–22900.
- Isgaard, J.; Arcopinto, M.; Karason, K.; Cittadini, A. GH and the cardiovascular system: An update on a topic at heart. *Endocrine* **2015**, *48*, 25–35.
- Webb, S.M. Quality of life in acromegaly. *Neuroendocrinology* **2006**, *83*, 224–229.
- Giustina, A.; Bevan, J.S.; Bronstein, M.D.; Casanueva, F.F.; Chanson, P.; Petersenn, S.; Thanh, X.-M.T.; Sert, C.; Houchard, A.; Guillemin, I.; et al. SAGIT®: clinician-reported outcome instrument for managing acromegaly in clinical practice—development and results from a pilot study. *Pituitary* **2016**, *19*, 39–49.
- Van der Lely, A.J.; Gomez, R.; Pleil, A.; Badia, X.; Brue, T.; Buchfelder, M.; Burman, P.; Clemmons, D.; Ghigo, E.; Jørgensen, J.O.L.; et al. Development of ACRODAT®, a new software medical device to assess disease activity in patients with acromegaly. *Pituitary* **2017**, *20*, 692–701.
- Newgard, C.B. Metabolomics and Metabolic Diseases: Where Do We Stand? *Cell Metab.* **2017**, *25*, 43–56.
- Cuschieri, S. The STROBE guidelines. *Saudi J. Anaesth.* **2019**, *13*, S31–S34.

20. Katznelson, L.; Laws, E.R.; Melmed, S.; Molitch, M.E.; Murad, M.H.; Utz, A.; Wass, J.A.H. Acromegaly: An Endocrine Society Clinical Practice Guideline. *J. Clin. Endocrinol. Metab.* **2014**, *99*, 3933–3951.
21. Matthews, D.R.; Hosker, J.P.; Rudenski, A.S.; Naylor, B.A.; Treacher, D.F.; Turner, R.C. Homeostasis model assessment: Insulin resistance and beta-cell function from fasting plasma glucose and insulin concentrations in man. *Diabetologia* **1985**, *28*, 412–419.
22. Cersosimo, E.; Solis-Herrera, C.; Trautmann, M.E.; Malloy, J.; Triplitt, C.L. Assessment of Pancreatic  $\beta$ -Cell Function: Review of Methods and Clinical Applications. *Curr. Diabetes Rev.* **2014**, *10*, 2–42.
23. Wallace, T.M.; Levy, J.C.; Matthews, D.R. Use and abuse of HOMA modeling. *Diabetes Care* **2004**, *27*, 1487–1495.
24. Sumner, L.W.; Amberg, A.; Barrett, D.; Beale, M.H.; Beger, R.; Daykin, C.A.; Fan, T.W.-M.; Fiehn, O.; Goodacre, R.; Griffin, J.L.; et al. Proposed minimum reporting standards for chemical analysis Chemical Analysis Working Group (CAWG) Metabolomics Standards Initiative (MSI). *Metabolomics* **2007**, *3*, 211–221.
25. Wishart, D.S.; Feunang, Y.D.; Marcu, A.; Guo, A.C.; Liang, K.; Vázquez-Fresno, R.; Sajed, T.; Johnson, D.; Li, C.; Karu, N.; et al. HMDB 4.0: The human metabolome database for 2018. *Nucleic Acids Res.* **2018**, *46*, D608–D617.
26. Ulrich, E.L.; Akutsu, H.; Doreleijers, J.F.; Harano, Y.; Ioannidis, Y.E.; Lin, J.; Livny, M.; Mading, S.; Maziuik, D.; Miller, Z.; et al. BioMagResBank. *Nucleic Acids Res.* **2008**, *36*, D402–D408.
27. Knacke, H.; Pietzner, M.; Do, K.T.; Römisch-Margl, W.; Kastenmüller, G.; Völker, U.; Völzke, H.; Krumsiek, J.; Artati, A.; Wallaschofski, H.; et al. Metabolic Fingerprints of Circulating IGF-1 and the IGF-1/IGFBP-3 Ratio: A Multifluid Metabolomics Study. *J. Clin. Endocrinol. Metab.* **2016**, *101*, 4730–4742.
28. Fuchs, S.; Bundy, J.G.; Davies, S.K.; Viney, J.M.; Swire, J.S.; Leroi, A.M. A metabolic signature of long life in *Caenorhabditis elegans*. *BMC Biol.* **2010**, *8*, 14.
29. Neinast, M.; Murashige, D.; Arany, Z. Branched Chain Amino Acids. *Annu. Rev. Physiol.* **2018**, doi:10.1146/annurev-physiol-020518-114455.
30. Mastrangelo, A.; Martos-Moreno, G.Á.; Rupérez, F.J.; Chowen, J.A.; Barbas, C.; Argente, J. Metabolomics changes in patients with PAPP-A2 deficiency in response to rhIGF1 treatment. *Growth Horm. IGF Res.* **2018**, *42*, 28–31.
31. Berger, M.; Zimmermann-Telschow, H.; Berchtold, P.; Drost, H.; Müller, W.A.; Gries, F.A.; Zimmermann, H. Blood amino acid levels in patients with insulin excess (functioning insulinoma) and insulin deficiency (diabetic ketosis). *Metabolism* **1978**, *27*, 793–799.
32. Wang, T.J.; Larson, M.G.; Vasan, R.S.; Cheng, S.; Rhee, E.P.; McCabe, E.; Lewis, G.D.; Fox, C.S.; Jacques, P.F.; Fernandez, C.; et al. Metabolite profiles and the risk of developing diabetes. *Nat. Med.* **2011**, *17*, 448–453.
33. Roberts, L.D.; Koulman, A.; Griffin, J.L. Towards metabolic biomarkers of insulin resistance and type 2 diabetes: Progress from the metabolome. *Lancet Diabetes Endocrinol.* **2014**, *2*, 65–75.
34. Ruiz-Canela, M.; Guasch-Ferré, M.; Toledo, E.; Clish, C.B.; Razquin, C.; Liang, L.; Wang, D.D.; Corella, D.; Estruch, R.; Hernández, Á.; et al. Plasma branched chain/aromatic amino acids, enriched Mediterranean diet and risk of type 2 diabetes: Case-cohort study within the PREDIMED Trial. *Diabetologia* **2018**, *61*, 1560–1571.
35. Kahl, S.; Roden, M. Amino acids—lifesaver or killer in patients with diabetes? *Nat. Rev. Endocrinol.* **2018**, *14*, 449–451.
36. Gancheva, S.; Jelenik, T.; Álvarez-Hernández, E.; Roden, M. Interorgan Metabolic Crosstalk in Human Insulin Resistance. *Physiol. Rev.* **2018**, *98*, 1371–1415.
37. Colao, A.; Auriemma, R.S.; Savastano, S.; Galdiero, M.; Grasso, L.F.S.; Lombardi, G.; Pivonello, R. Glucose Tolerance and Somatostatin Analog Treatment in Acromegaly: A 12-Month Study. *J. Clin. Endocrinol. Metab.* **2009**, *94*, 2907–2914.
38. Coculescu, M.; Niculescu, D.; Lichiardopol, R.; Purice, M. Insulin resistance and insulin secretion in non-diabetic acromegalic patients. *Exp. Clin. Endocrinol. Diabetes* **2007**, *115*, 308–316.
39. Ronchi, C.L.; Orsi, E.; Giavoli, C.; Cappiello, V.; Epaminonda, P.; Beck-Peccoz, P.; Arosio, M. Evaluation of insulin resistance in acromegalic patients before and after treatment with somatostatin analogues. *J. Endocrinol. Invest.* **2003**, *26*, 533–538.
40. Kasayama, S.; Otsuki, M.; Takagi, M.; Saito, H.; Sumitani, S.; Kouhara, H.; Koga, M.; Saitoh, Y.; Ohnishi, T.; Arita, N. Impaired beta-cell function in the presence of reduced insulin sensitivity determines glucose tolerance status in acromegalic patients. *Clin. Endocrinol. (Oxf.)* **2000**, *52*, 549–555.

41. Møller, N.; Schmitz, O.; Jørgensen, J.O.; Astrup, J.; Bak, J.F.; Christensen, S.E.; Alberti, K.G.; Weeke, J. Basal- and insulin-stimulated substrate metabolism in patients with active acromegaly before and after adenectomy. *J. Clin. Endocrinol. Metab.* **1992**, *74*, 1012–1019.
42. Cozzolino, A.; Feola, T.; Simonelli, I.; Puliani, G.; Pozza, C.; Giannetta, E.; Gianfrilli, D.; Pasqualetti, P.; Lenzi, A.; Isidori, A.M. Somatostatin Analogs and Glucose Metabolism in Acromegaly: A Meta-analysis of Prospective Interventional Studies. *J. Clin. Endocrinol. Metab.* **2018**, *103*, 2089–2099.
43. Tzanela, M.; Vassiliadi, D.A.; Gavalas, N.; Szabo, A.; Margelou, E.; Valatsou, A.; Vassilopoulos, C. Glucose homeostasis in patients with acromegaly treated with surgery or somatostatin analogues. *Clin. Endocrinol.* **2011**, *75*, 96–102.
44. Mazziotti, G.; Floriani, I.; Bonadonna, S.; Torri, V.; Chanson, P.; Giustina, A. Effects of somatostatin analogs on glucose homeostasis: A metaanalysis of acromegaly studies. *J. Clin. Endocrinol. Metab.* **2009**, *94*, 1500–1508.
45. Ho, K.K.; Jenkins, A.B.; Furler, S.M.; Borkman, M.; Chisholm, D.J. Impact of octreotide, a long-acting somatostatin analogue, on glucose tolerance and insulin sensitivity in acromegaly. *Clin. Endocrinol. (Oxf.)* **1992**, *36*, 271–279.
46. Giustina, G.; Peracchi, M.; Reschini, E.; Panerai, E.; Pinto, M. Dose-response study of the inhibiting effect of somatostatin on growth hormone and insulin secretion in normal subjects and acromegalic patients. *Metab. Clin. Exp.* **1975**, *24*, 807–815.
47. Feola, T.; Cozzolino, A.; Simonelli, I.; Sbardella, E.; Pozza, C.; Giannetta, E.; Gianfrilli, D.; Pasqualetti, P.; Lenzi, A.; Isidori, A.M. Pegvisomant Improves Glucose Metabolism in Acromegaly: A Meta-Analysis of Prospective Interventional Studies. *J. Clin. Endocrinol. Metab.* **2019**, *104*, 2892–2902.
48. Olarescu, N.C.; Heck, A.; Godang, K.; Ueland, T.; Bollerslev, J. The Metabolic Risk in Patients Newly Diagnosed with Acromegaly Is Related to Fat Distribution and Circulating Adipokines and Improves after Treatment. *Neuroendocrinology* **2016**, *103*, 197–206.
49. Olarescu, N.C.; Bollerslev, J. The Impact of Adipose Tissue on Insulin Resistance in Acromegaly. *Trends Endocrinol. Metab.* **2016**, *27*, 226–237.
50. Briet, C.; Ilie, M.D.; Kuhn, E.; Maione, L.; Brailly-Tabard, S.; Salenave, S.; Cariou, B.; Chanson, P. Changes in metabolic parameters and cardiovascular risk factors after therapeutic control of acromegaly vary with the treatment modality. Data from the Bicêtre cohort, and review of the literature. *Endocrine* **2019**, *63*, 348–360.
51. Reid, T.J.; Jin, Z.; Shen, W.; Reyes-Vidal, C.M.; Fernandez, J.C.; Bruce, J.N.; Kostadinov, J.; Post, K.D.; Freda, P.U. IGF-1 levels across the spectrum of normal to elevated in acromegaly: Relationship to insulin sensitivity, markers of cardiovascular risk and body composition. *Pituitary* **2015**, *18*, 808–819.
52. Urbani, C.; Sardella, C.; Calevro, A.; Rossi, G.; Scattina, I.; Lombardi, M.; Lupi, I.; Manetti, L.; Martino, E.; Bogazzi, F. Effects of medical therapies for acromegaly on glucose metabolism. *Eur. J. Endocrinol.* **2013**, *169*, 99–108.
53. Fryburg, D.A.; Gelfand, R.A.; Barrett, E.J. Growth hormone acutely stimulates forearm muscle protein synthesis in normal humans. *Am. J. Physiol.* **1991**, *260*, E499–E504.
54. Garibotto, G. Muscle amino acid metabolism and the control of muscle protein turnover in patients with chronic renal failure. *Nutrition* **1999**, *15*, 145–155.
55. Fryburg, D.A.; Louard, R.J.; Gerow, K.E.; Gelfand, R.A.; Barrett, E.J. Growth hormone stimulates skeletal muscle protein synthesis and antagonizes insulin's antiproteolytic action in humans. *Diabetes* **1992**, *41*, 424–429.
56. Horber, F.F.; Haymond, M.W. Human growth hormone prevents the protein catabolic side effects of prednisone in humans. *J. Clin. Invest.* **1990**, *86*, 265–272.
57. Nørrelund, H.; Nair, K.S.; Jørgensen, J.O.L.; Christiansen, J.S.; Møller, N. The Protein-Retaining Effects of Growth Hormone During Fasting Involve Inhibition of Muscle-Protein Breakdown. *Diabetes* **2001**, *50*, 96–104.
58. Sawa, R.; Nishida, H.; Yamamoto, Y.; Wake, I.; Kai, N.; Kikkawa, U.; Okimura, Y. Growth hormone and Insulin-like growth factor-I (IGF-I) modulate the expression of L-type amino acid transporters in the muscles of spontaneous dwarf rats and L6 and C2C12 myocytes. *Growth Horm. IGF Res.* **2018**, *42*, 66–73.
59. Sciascia, Q.L.; Pacheco, D.; McCoard, S.A. Administration of Exogenous Growth Hormone Is Associated with Changes in Plasma and Intracellular Mammary Amino Acid Profiles and Abundance of the Mammary Gland Amino Acid Transporter SLC3A2 in Mid-Lactation Dairy Cows. *PLoS ONE* **2015**, *10*, e0134323.

60. Møller, N.; Jørgensen, J.O.L. Effects of growth hormone on glucose, lipid, and protein metabolism in human subjects. *Endocr. Rev.* **2009**, *30*, 152–177.
61. Füchtbauer, L.; Olsson, D.S.; Bengtsson, B.-Å.; Norrman, L.-L.; Sunnerhagen, K.S.; Johannsson, G. Muscle strength in patients with acromegaly at diagnosis and during long-term follow-up. *Eur. J. Endocrinol.* **2017**, *177*, 217–226.
62. Miller, A.; Doll, H.; David, J.; Wass, J. Impact of musculoskeletal disease on quality of life in long-standing acromegaly. *Eur. J. Endocrinol.* **2008**, *158*, 587–593.
63. Li, R.; He, H.; Fang, S.; Hua, Y.; Yang, X.; Yuan, Y.; Liang, S.; Liu, P.; Tian, Y.; Xu, F.; et al. Time Series Characteristics of Serum Branched-Chain Amino Acids for Early Diagnosis of Chronic Heart Failure. *J. Proteome Res.* **2019**, *18*, 2121–2128.
64. Li, T.; Zhang, Z.; Kolwicz, S.C.; Abell, L.; Roe, N.D.; Kim, M.; Zhou, B.; Cao, Y.; Ritterhoff, J.; Gu, H.; et al. Defective Branched-Chain Amino Acid (BCAA) Catabolism Disrupts Glucose Metabolism and Sensitizes the Heart to Ischemia-reperfusion Injury. *Cell Metab.* **2017**, *25*, 374–385.
65. Akutsu, H.; Kreutzer, J.; Wasmeier, G.; Ropers, D.; Rost, C.; Möhlig, M.; Wallaschofski, H.; Buchfelder, M.; Schöfl, C. Acromegaly per se does not increase the risk for coronary artery disease. *Eur. J. Endocrinol.* **2010**, *162*, 879–886.
66. Aulinas, A.; Crespo, I.; Viladés, D.; Leta, R.; Urgell, E.; Biagetti, B.; Webb, S.M.; Valassi, E. Cystatin-C and epicardial adipose tissue as noninvasive predictors of cardiovascular risk in acromegaly. *Clin. Endocrinol. (Oxf.)* **2017**, *86*, 214–222.
67. Bogazzi, F.; Battolla, L.; Spinelli, C.; Rossi, G.; Gavioli, S.; Bello, V.D.; Cosci, C.; Sardella, C.; Volterrani, D.; Talini, E.; et al. Risk Factors for Development of Coronary Heart Disease in Patients with Acromegaly: A Five-Year Prospective Study. *J. Clin. Endocrinol. Metab.* **2007**, *92*, 4271–4277.
68. Cannavo, S.; Almoto, B.; Cavalli, G.; Squadrito, S.; Romanello, G.; Vigo, M.T.; Fiumara, F.; Benvenega, S.; Trimarchi, F. Acromegaly and Coronary Disease: An Integrated Evaluation of Conventional Coronary Risk Factors and Coronary Calcifications Detected by Computed Tomography. *J. Clin. Endocrinol. Metab.* **2006**, *91*, 3766–3772.
69. Dong, W.; Zhou, M.; Dong, M.; Pan, B.; Liu, Y.; Shao, J.; Gu, X.; Huang, Y.; Li, G.; Wang, Y.; et al. Keto acid metabolites of branched-chain amino acids inhibit oxidative stress-induced necrosis and attenuate myocardial ischemia-reperfusion injury. *J. Mol. Cell. Cardiol.* **2016**, *101*, 90–98.
70. Ra, S.-G.; Miyazaki, T.; Kojima, R.; Komine, S.; Ishikura, K.; Kawanaka, K.; Honda, A.; Matsuzaki, Y.; Ohmori, H. Effect of BCAA supplement timing on exercise-induced muscle soreness and damage: A pilot placebo-controlled double-blind study. *J. Sports Med. Phys. Fit.* **2018**, *58*, 1582–1591.
71. VanDusseldorp, T.A.; Escobar, K.A.; Johnson, K.E.; Stratton, M.T.; Moriarty, T.; Cole, N.; McCormick, J.J.; Kerkisick, C.M.; Vaughan, R.A.; Dokladny, K.; et al. Effect of Branched-Chain Amino Acid Supplementation on Recovery Following Acute Eccentric Exercise. *Nutrients* **2018**, *10*, 1389.
72. Hiraoka, A.; Michitaka, K.; Kiguchi, D.; Izumoto, H.; Ueki, H.; Kaneto, M.; Kitahata, S.; Aibiki, T.; Okudaira, T.; Tomida, H.; et al. Efficacy of branched-chain amino acid supplementation and walking exercise for preventing sarcopenia in patients with liver cirrhosis. *Eur. J. Gastroenterol. Hepatol.* **2017**, *29*, 1416–1423.
73. Kitajima, Y.; Takahashi, H.; Akiyama, T.; Murayama, K.; Iwane, S.; Kuwashiro, T.; Tanaka, K.; Kawazoe, S.; Ono, N.; Eguchi, T.; et al. Supplementation with branched-chain amino acids ameliorates hypoalbuminemia, prevents sarcopenia, and reduces fat accumulation in the skeletal muscles of patients with liver cirrhosis. *J. Gastroenterol.* **2018**, *53*, 427–437.
74. Ishikawa, T.; Kitaura, Y.; Kadota, Y.; Morishita, Y.; Ota, M.; Yamanaka, F.; Xu, M.; Ikawa, M.; Inoue, N.; Kawano, F.; et al. Muscle-specific deletion of BDK amplifies loss of myofibrillar protein during protein undernutrition. *Sci. Rep.* **2017**, *7*, 39825.
75. Xu, M.; Kitaura, Y.; Ishikawa, T.; Kadota, Y.; Terai, C.; Shindo, D.; Morioka, T.; Ota, M.; Morishita, Y.; Ishihara, K.; et al. Endurance performance and energy metabolism during exercise in mice with a muscle-specific defect in the control of branched-chain amino acid catabolism. *PLoS ONE* **2017**, *12*, e0180989.

